

C B s 7 | | i f | 1

7 | | i f | :

The California State University, Bakersfield (CSUB) [Guiding Principles](#) begin with a commitment to academic excellence and to the pursuit of integrity and truth. CSUB administrators, faculty, staff, and students are expected to honor and uphold these principles and in so doing protect the integrity of all academic work. A degree at CSUB is a product of our campus's commitment to ethical behavior, academic integrity, and academic excellence. When a violation of academic integrity occurs, it diminishes the value of that degree and impacts the reputation of our campus.

— | :

is providing answers or information on an assignment or exam to a fellow student without approval of the instructor.

is working with others on an assignment or exam without approval of the instructor and/or copying from someone else without their knowledge.

Both unauthorized assistance and collaboration interfere with the ability of the instructor to evaluate the individual student's performance in their course.

includes using computers, computer programs, cell phones, calculators, or other software or electronic aids to gain an unfair academic advantage without permission of the instructor.

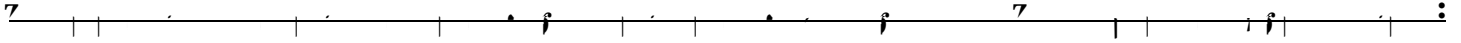
includes, but is not limited to, falsifying signatures, such as another student's signature or a faculty/staff signature on a university form (for example, an add/drop form).

Using to complete an assignment or exam developed to assess your knowledge of a particular subject matter, idea, or concept or using it without the explicit permission of the instructor for the purpose of gaining an unfair academic advantage would also be considered a violation.

Any violation of Academic Integrity should be reported to the Dean of Students' Office.

When a faculty, staff, or administrator discovers a violation of the academic integrity policy, they shall discuss the violation, including the evidence, with the student(s) involved and allow the student(s) to respond. Any academic penalty, including the student's potential grade penalty for the offense, falls within the purview of the faculty member teaching the course. (See "Recommended Consequences for Academic Dishonesty.") For further guidance, consult with the appropriate Program Director, Department Chair, Academic Dean, or Dean of Students' Office.

After the violation has occurred and the penalty imposed, the incident, with all supporting evidence,nyoppproe



In addition to the academic penalty assigned by the faculty member and/or program, disciplinary sanctions imposed by the University may include probation, suspension, permanent expulsion from the university and from the CSU system, or the withholding of a degree.

Disciplinary probation will be noted on the student's formal academic record only for the duration of the probationary period. Disciplinary suspension of more than an academic year and expulsion will be part of the student's permanent academic record. Once a disciplinary sanction is determined, the outcome will be provided to the instructor who reported the incident and remains in the student's electnarr

